



ALLEGHENY COUNTY AIRPORT AUTHORITY

PITTSBURGH INTERNATIONAL AIRPORT
ALLEGHENY COUNTY AIRPORT

Leaving 2019 Behind

June 21, 2024




ALLEGHENY COUNTY AIRPORT AUTHORITY
PITTSBURGH INTERNATIONAL AIRPORT
ALLEGHENY COUNTY AIRPORT

10 years ago, the focus was still on US Airways pullout




The prospects for the future are bright and getting *busier*.



Coming in July: Busiest ever for several airlines at PIT

- **Most capacity ever offered at PIT in a single month from:**
 - Southwest
 - Spirit
 - Breeze
 - Frontier
 - American (post-merger)

Airlines Schedule Record-Breaking Seats at PIT This Summer

	July: Most scheduled seats (298k)
	July: Most scheduled seats (262k) (since at least 2005; excluding US Airways)
	July: Most scheduled seats (144k)
	July: Most scheduled seats (49k) (since returning to PIT in 2016)
	July: Most scheduled seats (29k)

Source: Cirium Innovata schedules
As of 6/4/24



Record-breaking seats a result of several new routes that began this spring

New launches in June including:

- Southwest nonstop to San Diego
- Spirit nonstop to Houston
- Spirit nonstop to Boston

On the heels of several May launches:

- Icelandair to Reykjavik
- Frontier to 4 destinations (PHL)
- Spirit to LGA
- Breeze to San Diego



Breaking News: Delta will resume nonstop service between Pittsburgh and Salt Lake City in November

- It operated pre-pandemic, but was suspended at the onset of the pandemic.
- Currently PIT's #1 unserved destination by passenger demand
- In addition to a strong local market, Salt Lake City is a key West Coast intermediary with dozens of one-stop connections.
- Route will be daily year-round service.

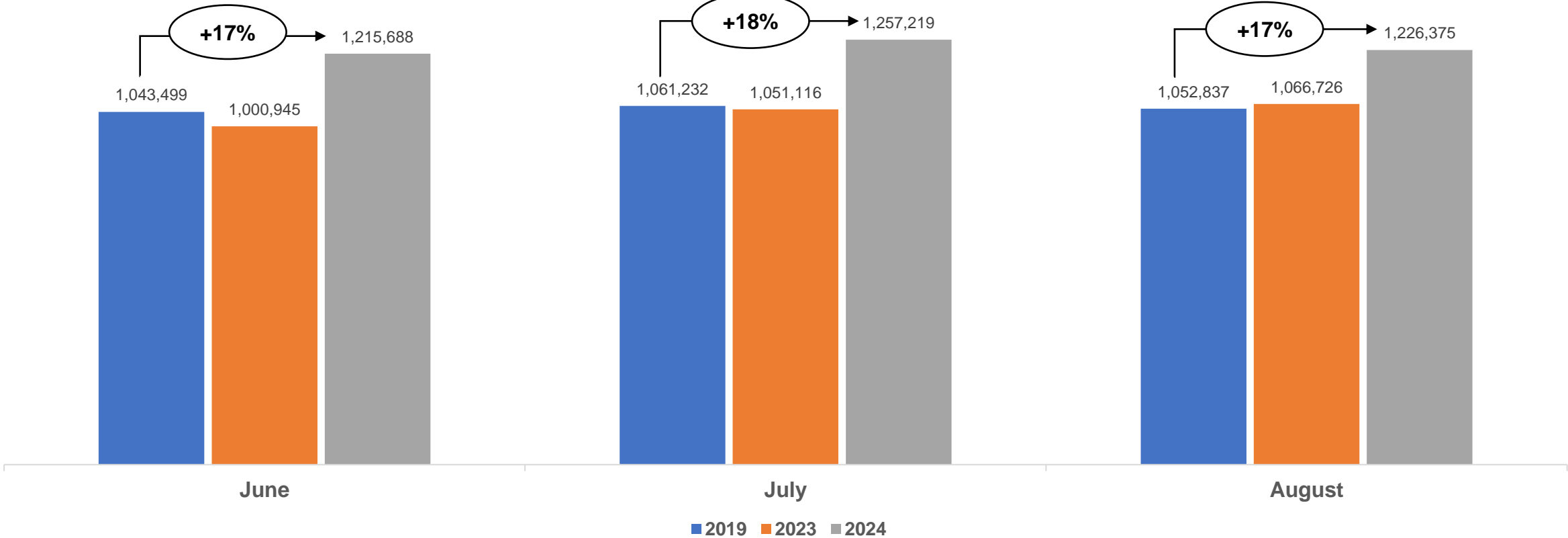


Sources: Cirium Innovata schedules (Maximum of 135% circuitry allowed for connections), US DOT O&D Survey



Scheduled seats will exceed pre-pandemic levels by 17% in upcoming months

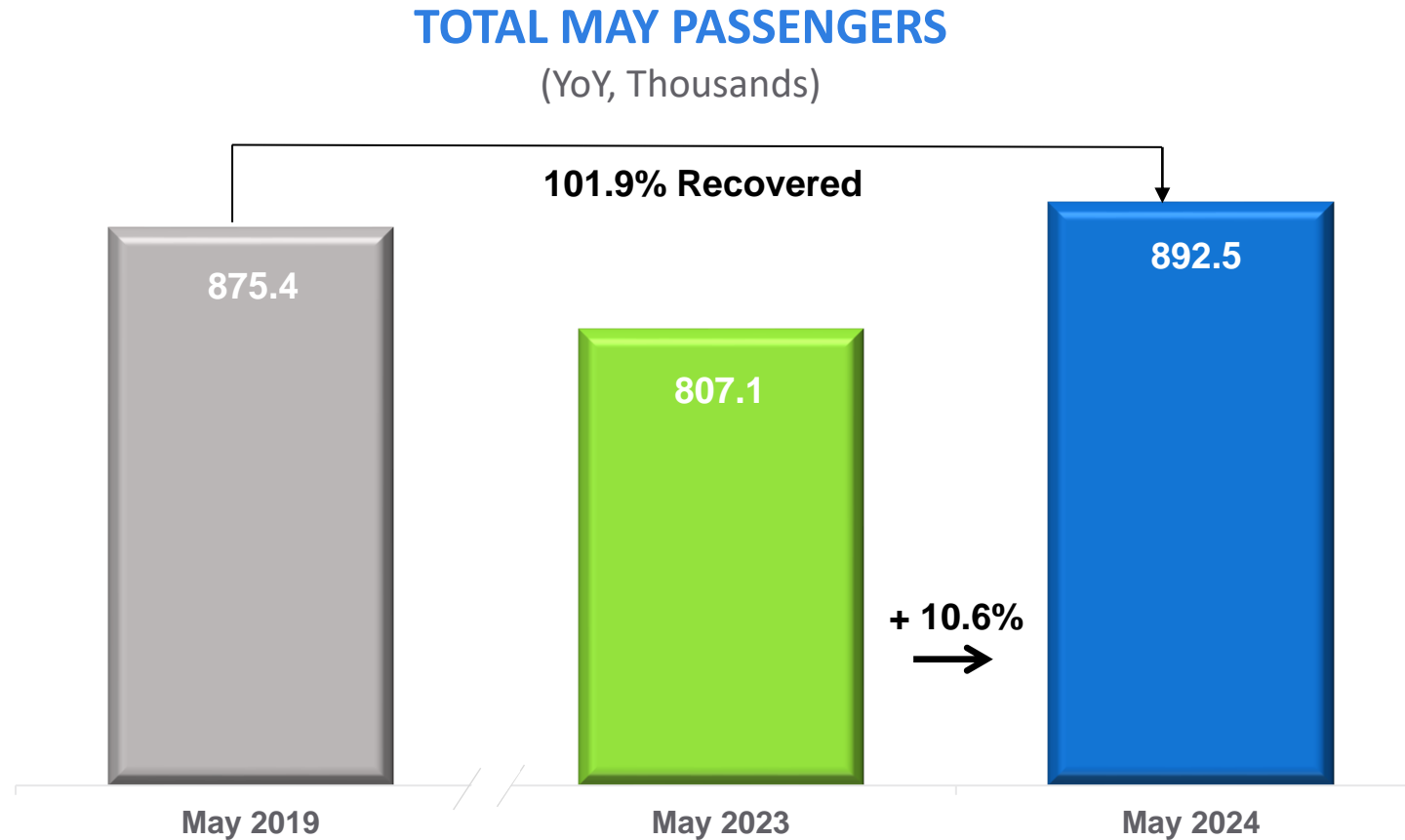
Scheduled Capacity at PIT (June - August)



SOURCE: Cirium Innovata Schedule



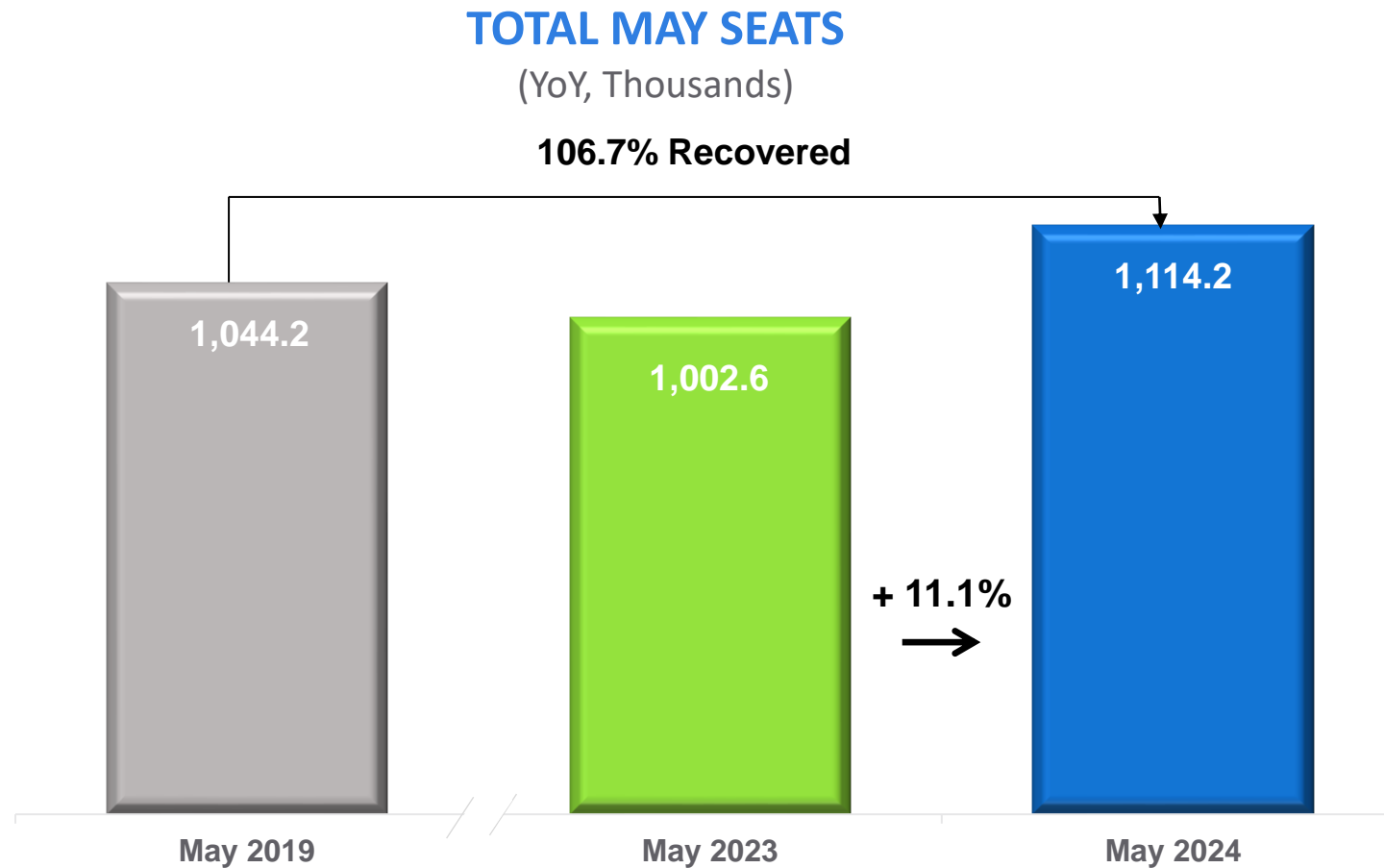
Driven by strong travel demand, this was the busiest May for passenger traffic in 17 years



SOURCE: Allegheny County Airport Authority



May scheduled seat capacity grew 11% year-over-year



SOURCE: Allegheny County Airport Authority

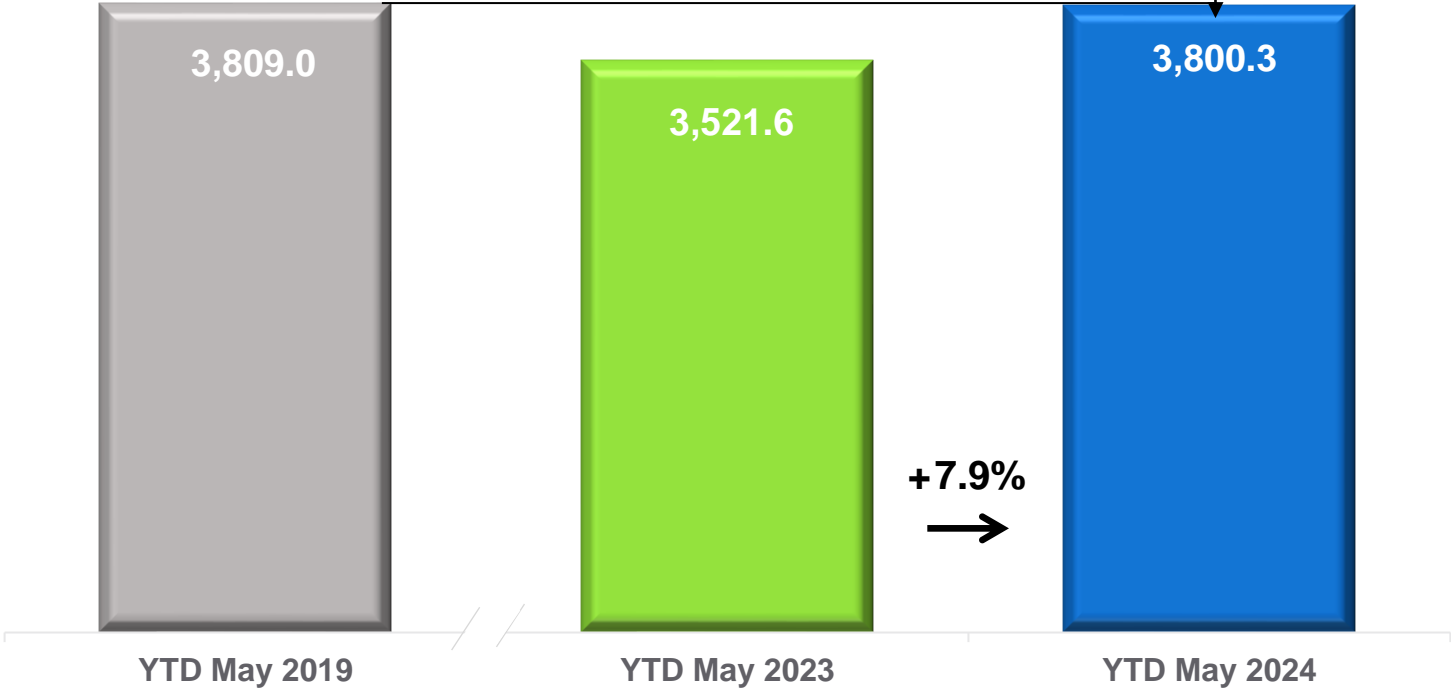


Year-to-date traffic increased with passenger traffic over 99% of pre-pandemic levels

TOTAL YEAR-TO-DATE PASSENGERS

(YoY, Thousands)

99.8% Recovered



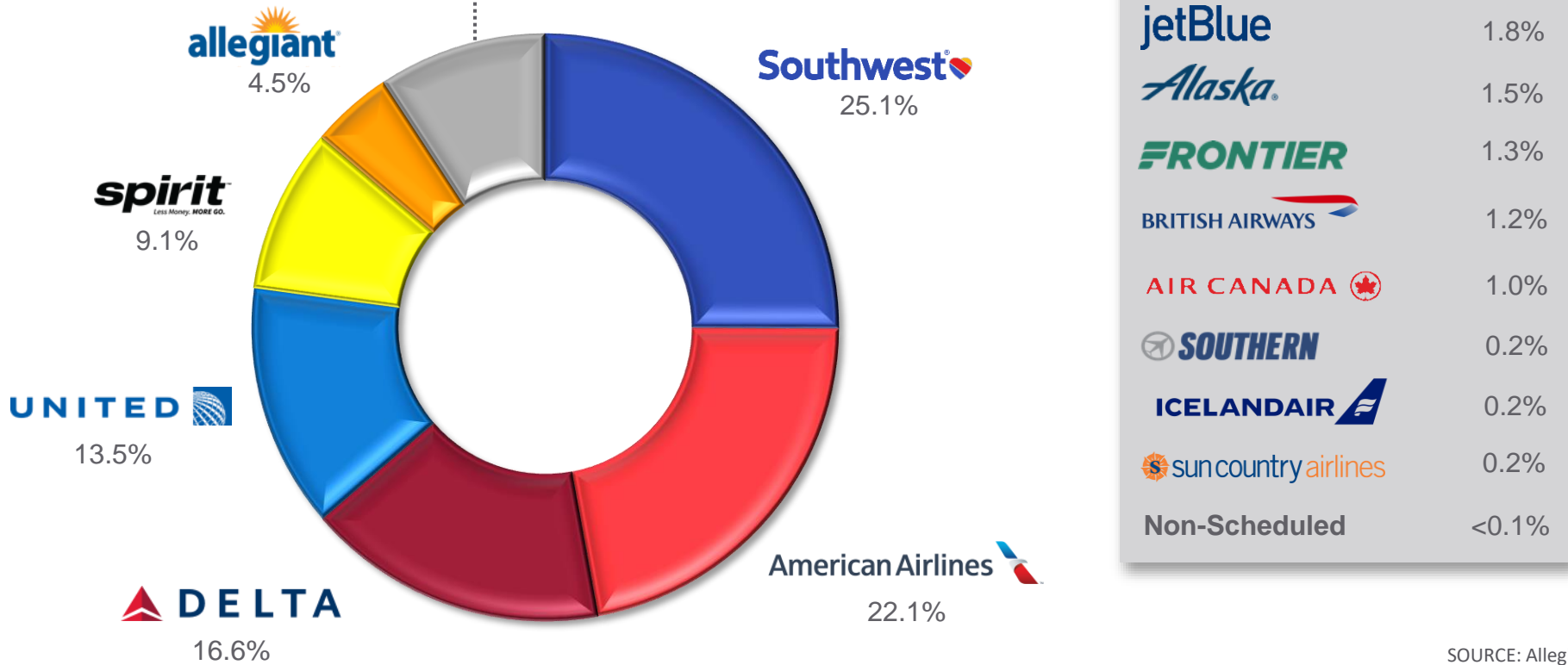
SOURCE: Allegheny County Airport Authority



In May, ultra-low-cost carriers carried 17% of total passengers at PIT

PITTSBURGH PASSENGER SHARE BY CARRIER

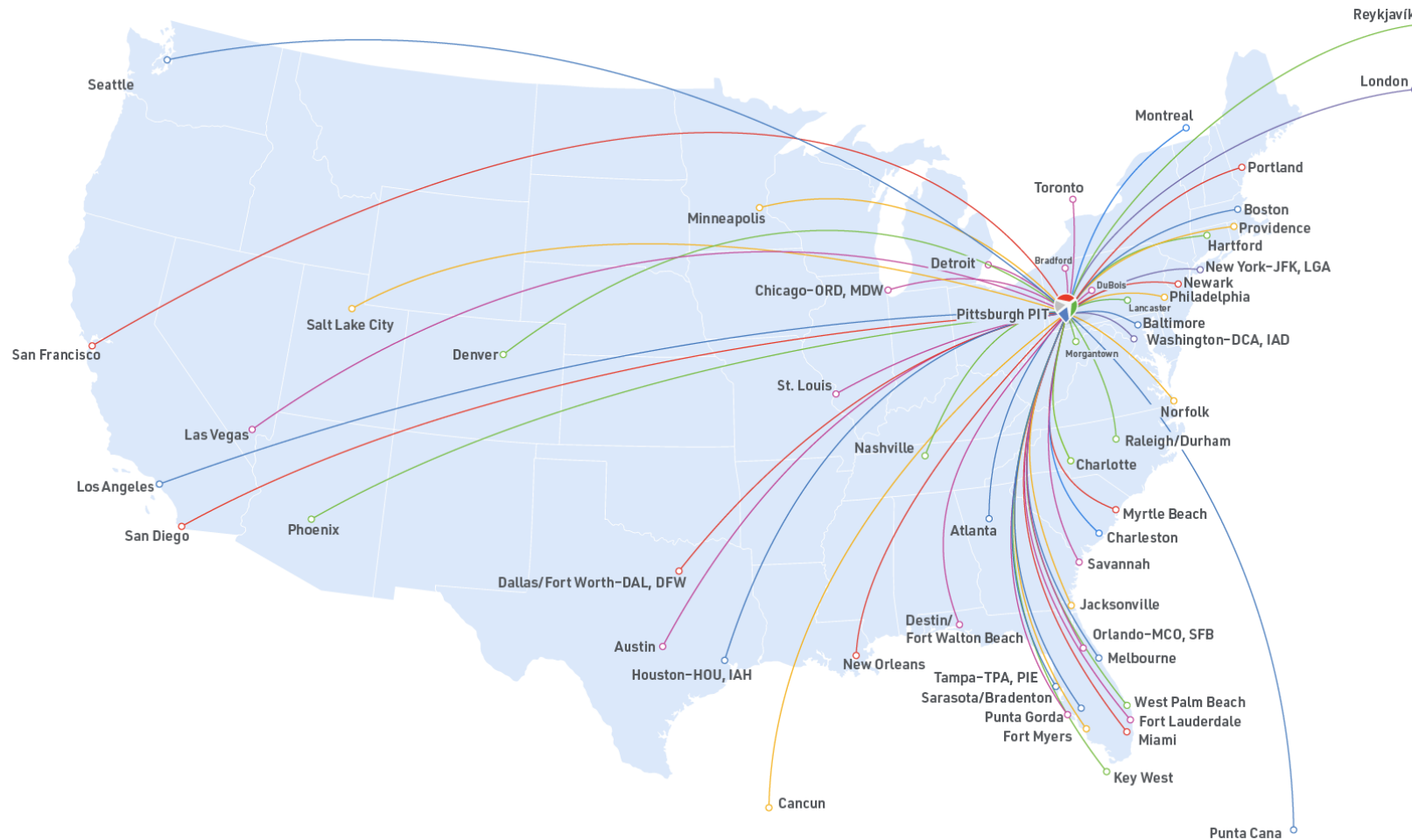
(May 2024)



SOURCE: Allegheny County Airport Authority
NOTE: Values are rounded



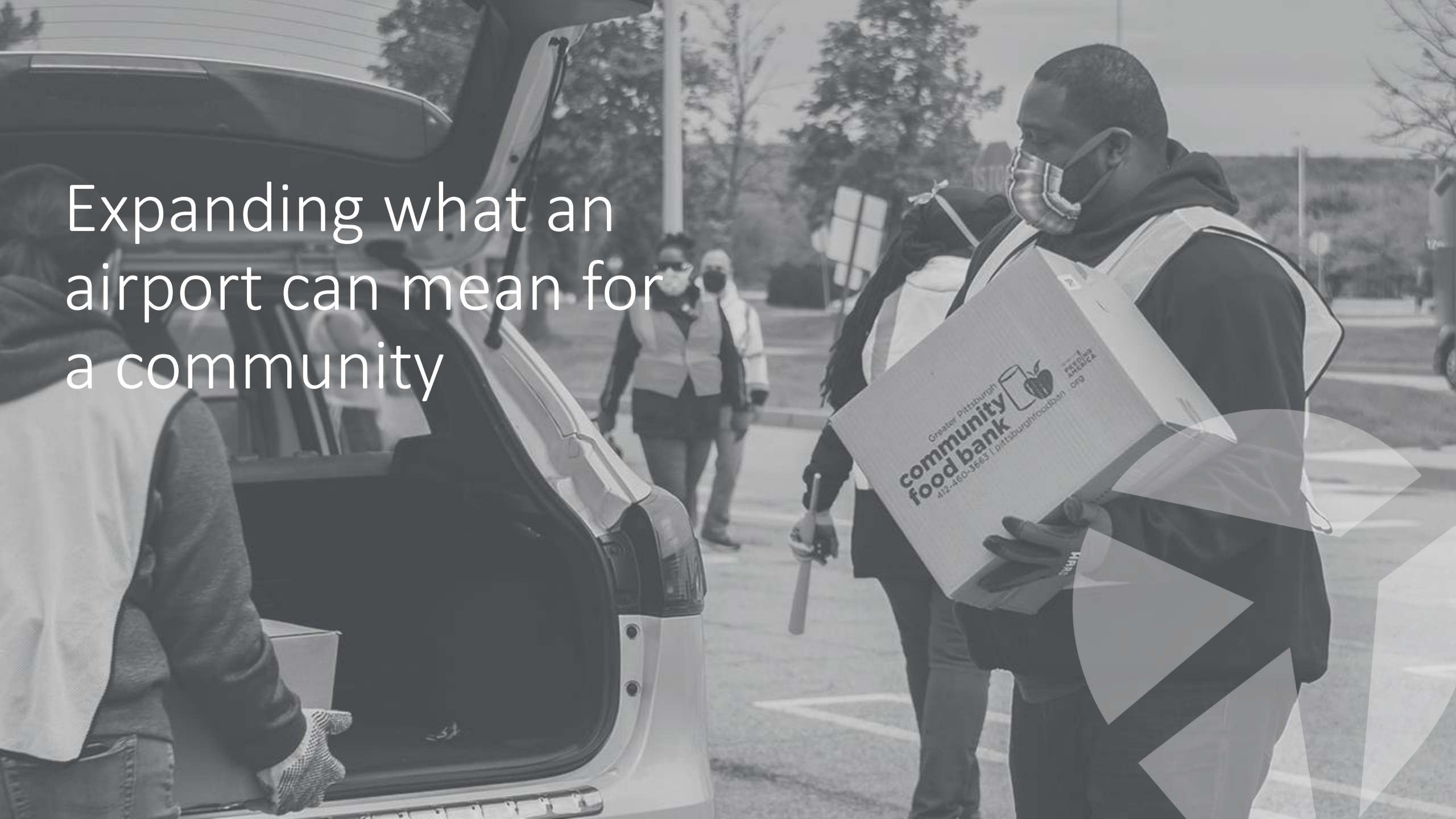
With announcements by several airlines, PIT now has nonstop service to 62 destinations with 171 peak-day departures



Source: Cirium Innovata schedules



Expanding what an
airport can mean for
a community



Honoring a D-Day veteran as he journeyed to commemorate the invasion's 80th anniversary

- At 99, D-Day veteran Warren Goss visited Normandy, France, to commemorate the 80th anniversary of the D-Day invasion.
- A local resident, Goss flew from PIT earlier this month. PIT staff organized a send-off after the Veterans Breakfast Club group reached out to notify us of his travel plans.





PIT HONORS D-DAY VETERAN

PIT2Work continues to change lives as 4th class graduates



- **13 students graduated as part of the 4th cohort in collaboration with:**
 - Partner4Work
 - Intro to the Construction Trades
 - Pittsburgh Gateways
- **Since its first class in July 2023, PIT2Work has received national recognition for supporting workforce development.**
- **The program was named an honoree by Fast Company Magazine's 2024 World Changing Ideas.**

PIT2Work

Work with your producer



The New Pittsburgh International Airport

Building Momentum for 2025

June 21, 2024

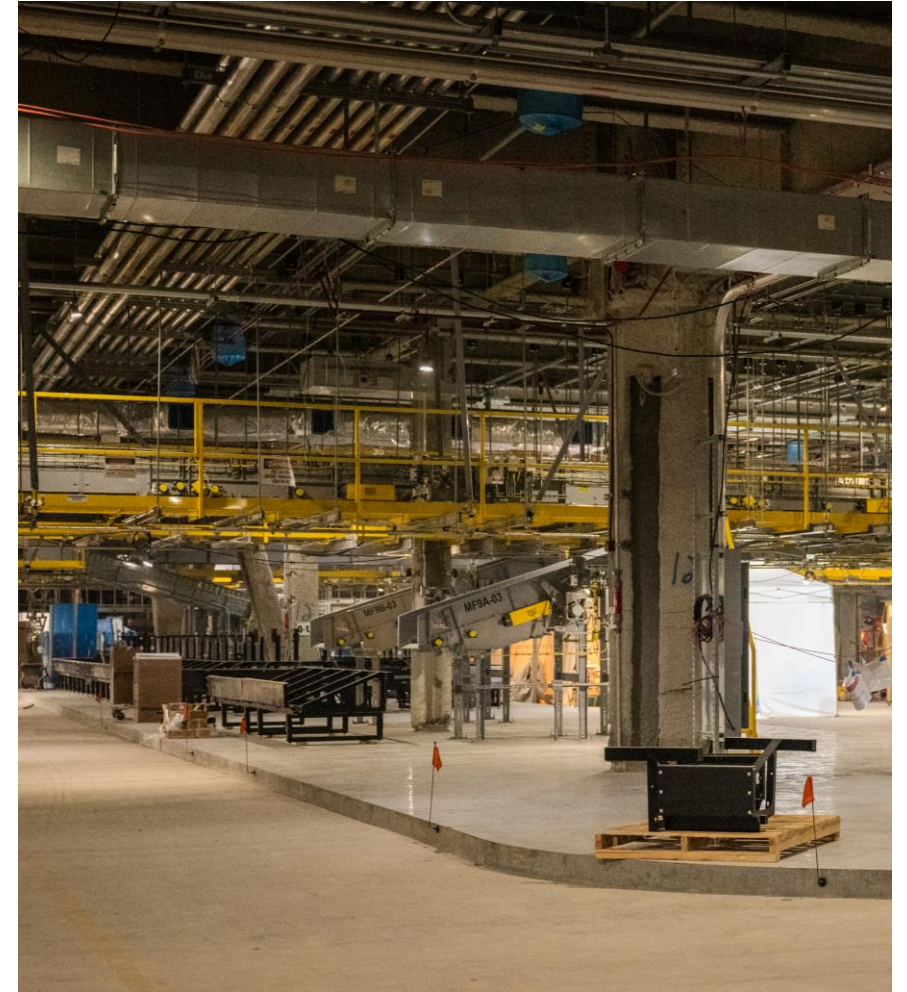


ALLEGHENY COUNTY AIRPORT AUTHORITY
PITTSBURGH INTERNATIONAL AIRPORT
ALLEGHENY COUNTY AIRPORT



More and more milestones are being reached, as new airport construction surpasses 68% completion

- Baggage System Installation Continues
- Parking Garage Bridge, MSE Wall Completion
- Escalator and Elevator Installation
- Parking Garage Ramp Column Completion
- Med. Voltage Primary Switchgear Setting
- Departures Level Low Roof Fireproofing
- Departures Level High Ceiling Installation



Our new airport terminal's roof will soon be dried-in, with green terraces waterproofed shortly thereafter



Parking garage structural concrete and ramp work continues, on-schedule for completion this summer

- South Exit Speed Ramp Column and Form Work Recently Reached 100% Completion
- Traffic Coating, One of the Last Remaining Garage Elements, Commenced Last Week
- Concrete Topping Slab Placement Currently 95% Completed
- Commercial Parking Lot Construction Currently 59% Completed



The new airport roadway system is zooming toward completion

- Approach on Current Roadways Recently Altered to Facilitate Completion
- Bridge 4 of the Exit Roadways Recently Installed, Currently Pouring Concrete
- Parapet Wall Installation
- Bollard Installation
- Roadway Concrete Near Completion



As construction continues toward opening day, the next few months will yield even more significant milestones

- New Terminal Power Fully Connected
- Customer Service Building Structural Steel Completion
- Escalator Installation
- Freight Elevator Installation
- Secondary Electrical System Activation
- Mechanical Systems Activation Start
- Customs Baggage System Completed





We are doing more than building a new airport

14,300 total jobs

\$2.5B in economic impact

No local or state tax dollars used

90% of materials and services sourced locally



ALLEGHENY COUNTY AIRPORT AUTHORITY

PITTSBURGH INTERNATIONAL AIRPORT
ALLEGHENY COUNTY AIRPORT



ALLEGHENY COUNTY AIRPORT AUTHORITY

PITTSBURGH INTERNATIONAL AIRPORT
ALLEGHENY COUNTY AIRPORT